

Feel the comforting relief of Soothe® Eye Care products from the experts at Bausch + Lomb



Choose the right Soothe® Eye Care product for you.



Redness Relief



Itchiness & Redness Relief



Dry Eye Relief



Ophthalmic Dry Eye Ointment



Dry Eye Lipid Layer Restoration



Preservative-Free Dry Eye Therapy



Preservative-Free Allergy & Dry Eye Relief

[Learn More](#)



Eyes feeling dry?

There are many physical and environmental factors that can contribute to dry eye. Understand the factors so you can find which solution is right for you.

[Learn More](#)



Preservative-Free Dry Eye Therapy in a Unique Control Grip bottle for ease of use.

[Learn More](#)

Choose the right Soothe® Eye Care product for you.



Redness Relief



Itchiness & Redness Relief



Dry Eye Relief



Ophthalmic Dry Eye Ointment



Dry Eye Lipid Layer Restoration



Preservative-Free Dry Eye Therapy



Preservative-Free Allergy & Dry Eye Relief

[Learn More](#)



Eyes feeling dry?

There are many physical and environmental factors that can contribute to dry eye. Understand the factors so you can find which solution is right for you.

[Learn More](#)



Treat and prevent
symptoms of allergic
conjunctivitis, naturally
with Ectoine.

Learn More

Choose the right Soothe® Eye Care product for you.



Redness Relief



Itchiness & Redness Relief



Dry Eye Relief



Ophthalmic Dry Eye Ointment



Dry Eye Lipid Layer Restoration



Preservative-Free Dry Eye Therapy



Preservative-Free Allergy & Dry Eye Relief

Learn More



Eyes feeling dry?

There are many physical and environmental factors that can contribute to dry eye. Understand the factors so you can find which solution is right for you.

Learn More

The eye's protective layer is thinner than a human hair, and it's what stands between the eyes and the world¹.

If you have dry eye symptoms, you are more likely to have a relatively thin lipid layer².

[Learn More](#)

¹ Blackie CA et al. The relationship between dry eye symptoms and lipid layer thickness. Cornea. 2009 Aug; 28(7): 789-94
² Complexity of the tear film: Importance in homeostasis and dysfunction during disease. doi: 10.1016/j.jexer.2013.10.008

Choose the right Soothe® Eye Care product for you.



Redness Relief



Itchiness & Redness Relief



Dry Eye Relief



Ophthalmic Dry Eye Ointment



Dry Eye Lipid Layer Restoration



Preservative-Free Dry Eye Therapy



Preservative-Free Allergy & Dry Eye Relief

[Learn More](#)

Eyes feeling dry?

There are many physical and environmental factors that can contribute to dry eye. Understand the factors so you can find which solution is right for you.

[Learn More](#)



Soothe® Preservative-Free Allergy + Dry Eye

Soothe Preservative-Free Allergy + Dry Eye offers dual-action treatment for sufferers of allergic conjunctivitis and dry eye. This eye drop solution contains 2% of Ectoine, a natural substance that creates a water barrier, inhibiting allergens from reaching the receptors which causes inflammation, and 0.24% of the clinically proven natural moisturizer hyaluronic acid (as sodium hyaluronate), found in the structures of a healthy human eye and the natural tear film.

Key Features & Benefits

- Protects the eye against the harmful influences of allergens
- Provides soothing hydration for dry eyes
- Suitable for Adults and Children (ages 5 or older)
- Suitable for use with soft and rigid contact lenses

Buy Now

Ingredients

Usage/Directions

Warnings

Other Information

Active Ingredients

- 2% Ectoine
- 0.24% Sodium hyaluronate

Other Ingredients:

- Sodium chloride
- Sodium hydroxide (for ph adjustment)
- Water for injection

There’s a treatment for you.

Different causes of eye irritations mean different treatments. If you’re unsure of the cause or best solution for you, check out our family of eye drops, or see your eye care professional.



Redness Relief

Learn More



Itchiness & Redness Relief

Learn More



Dry Eye Relief

Learn More



Ophthalmic Dry Eye Ointment

Learn More



Dry Eye Lipid Layer Restoration

Learn More



Preservative-Free Dry Eye Therapy

Learn More



Preservative-Free Allergy & Dry Eye Relief

Learn More



Soothe® Preservative-Free Allergy + Dry Eye

Soothe Preservative-Free Allergy + Dry Eye offers dual-action treatment for sufferers of allergic conjunctivitis and dry eye. This eye drop solution contains 2% of Ectoine, a natural substance that creates a water barrier, inhibiting allergens from reaching the receptors which causes inflammation, and 0.24% of the clinically proven natural moisturizer hyaluronic acid (as sodium hyaluronate), found in the structures of a healthy human eye and the natural tear film.

Key Features & Benefits

- Protects the eye against the harmful influences of allergens
- Provides soothing hydration for dry eyes
- Suitable for Adults and Children (ages 5 or older)
- Suitable for use with soft and rigid contact lenses

Buy Now

Ingredients

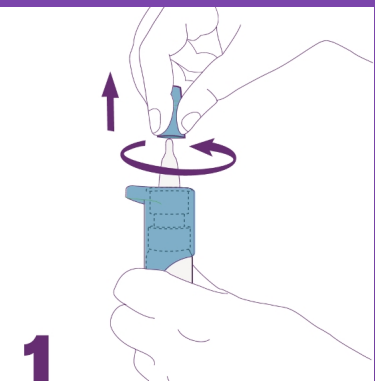
Usage/Directions

Warnings

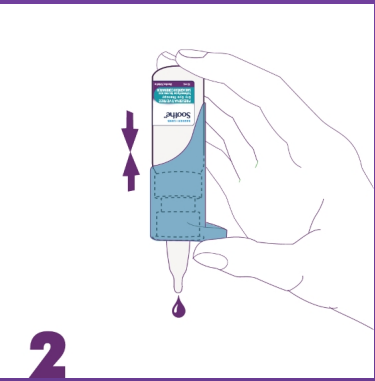
Other Information

How to use Soothe Preservative Free Allergy + Dry Eye ?

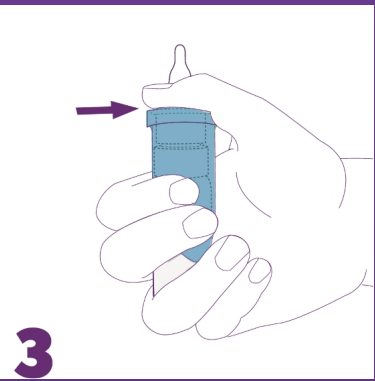
- The patented pump mechanism delivers a perfect drop every time and allows the eye drop solution to be preservative free and safe for long-term use.



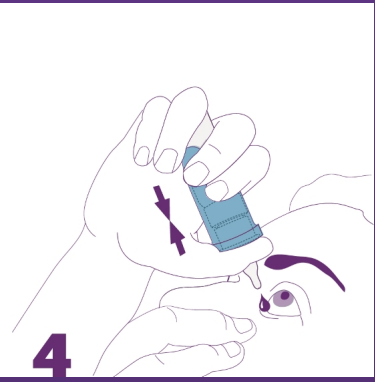
Before each use, wash your hands and remove the protective cap from the tip of the bottle with a rotating movement. Avoid contact of the tip of the bottle with your fingers or any other surfaces to prevent any possible contamination of the solution.



Attention! Before first use and if the bottle has not been used for a while: Point the bottle with the tip downwards and press repeatedly the pump mechanism until a drop is released. Now the bottle is ready to use.



Hold the bottle as indicated: place your thumb on the thumb support and enclose the lower part with your fingers. Two fingers should be placed on the bottom of the bottle.



Lean your head back slightly and gently pull your lower eyelid down with a finger of your free hand. Hold the bottle in a vertical position over your eye and press the pump mechanism together to apply one or two drops into the eye. Close your eye afterwards, slowly move it back and forth and then blink your eyes in order to optimally spread the drop on the surface of your eye. Avoid touching the surface of your eye with the bottle tip to prevent any possible injury and/or contamination of the solution. Replace the protective cap on the tip of the bottle immediately after use.

There's a treatment for you.

Different causes of eye irritations mean different treatments. If you're unsure of the cause or best solution for you, check out our family of eye drops, or see your eye care professional.



Redness Relief

Learn More



Itchiness & Redness Relief

Learn More



Dry Eye Relief

Learn More



Ophthalmic Dry Eye Ointment

Learn More



Dry Eye Lipid Layer Restoration

Learn More



Preservative-Free Dry Eye Therapy

Learn More



Preservative-Free Allergy & Dry Eye Relief

Learn More

There's a treatment for you.

Different causes of eye irritations mean different treatments. If you're unsure of the cause or best solution for you, check out our family of eye drops, or see your eye care professional.



Redness Relief

Learn More



Itchiness & Redness Relief

Learn More



Dry Eye Relief

Learn More



Ophthalmic Dry Eye Ointment

Learn More



Dry Eye Lipid Layer Restoration

Learn More



Preservative-Free Dry Eye Therapy

Learn More



Preservative-Free Allergy & Dry Eye Relief

Learn More

Soothe® Preservative-Free Allergy + Dry Eye

Soothe Preservative-Free Allergy + Dry Eye offers dual-action treatment for sufferers of allergic conjunctivitis and dry eye. This eye drop solution contains 2% of Ectoine, a natural substance that creates a water barrier, inhibiting allergens from reaching the receptors which causes inflammation, and 0.24% of the clinically proven natural moisturizer hyaluronic acid (as sodium hyaluronate), found in the structures of a healthy human eye and the natural tear film.

Key Features & Benefits

- Protects the eye against the harmful influences of allergens
- Provides soothing hydration for dry eyes
- Suitable for Adults and Children (ages 5 or older)
- Suitable for use with soft and rigid contact lenses

Buy Now

Ingredients

Usage/Directions

Warnings

Other Information

For external use only

Do not use

- If you are hypersensitive to any of its ingredients
- Do not use beyond expiry date
- Do not use if product packaging and/or bottle are damaged

When using this product

- Do not touch the eye surface with the tip of the bottle to prevent any possible injury of the eye surface and/or contamination of the solution
- Once opened do not share the bottle with anyone else

There’s a treatment for you.

Different causes of eye irritations mean different treatments. If you’re unsure of the cause or best solution for you, check out our family of eye drops, or see your eye care professional.



Redness Relief

Learn More



Itchiness & Redness Relief

Learn More



Dry Eye Relief

Learn More



Ophthalmic Dry Eye Ointment

Learn More



Dry Eye Lipid Layer Restoration

Learn More



Preservative-Free Dry Eye Therapy

Learn More



Preservative-Free Allergy & Dry Eye Relief

Learn More



Soothe® Preservative-Free Allergy + Dry Eye

Soothe Preservative-Free Allergy + Dry Eye offers dual-action treatment for sufferers of allergic conjunctivitis and dry eye. This eye drop solution contains 2% of Ectoine, a natural substance that creates a water barrier, inhibiting allergens from reaching the receptors which causes inflammation, and 0.24% of the clinically proven natural moisturizer hyaluronic acid (as sodium hyaluronate), found in the structures of a healthy human eye and the natural tear film.

Key Features & Benefits

- Protects the eye against the harmful influences of allergens
- Provides soothing hydration for dry eyes
- Suitable for Adults and Children (ages 5 or older)
- Suitable for use with soft and rigid contact lenses

Buy Now

Ingredients

Usage/Directions

Warnings

Other Information

- Format: Soothe Preservative-Free Allergy + Dry Eye is supplied in a 10mL plastic easy grip bottle
- Storage temperature: 2-25°C
- Keep out of reach of children
- Can be used for up to 6 months after the bottle is opened and the bottle should be discarded after that time

There’s a treatment for you.

Different causes of eye irritations mean different treatments. If you’re unsure of the cause or best solution for you, check out our family of eye drops, or see your eye care professional.



Redness Relief

Learn More



Itchiness & Redness Relief

Learn More



Dry Eye Relief

Learn More



Ophthalmic Dry Eye Ointment

Learn More



Dry Eye Lipid Layer Restoration

Learn More



Preservative-Free Dry Eye Therapy

Learn More



Preservative-Free Allergy & Dry Eye Relief

Learn More



Get the comforting relief of
Soothe® Eye Care products from
the experts at Bausch + Lomb.



Purchase online at these retailers:

AMAZON

WELL.CA

SHOPPERS DRUG
MART

WALMART

LONDON DRUGS

LOBLAWS

JEAN COUTU

Save \$2

when purchasing one (1) Soothe® Eye
Drops or Ointment in store

Get Coupon